



DOOR ACCESS 712

BASIC SETUP CONFIGURATION



DOOR ACCESS 712

ONE DOOR ACCESS CONTROLLER

TECHNICAL PARAMETER

SPECIFICATIONS

SPECIFICATIONS

1.TECHNICAL PARAMETER

1.	ITEM	VALUE
2.	OPERATION VOLTAGE	<100MA
3.	OPERATION CURRENT	120X78X22MM
4.	DIMENSIONS	DIMENSIONS
5.	WEIGHT	110G
6.	AMBIENT TEMPTATION	0-60'
7.	RELATIVE HUMIDLY	20%-80%
8.	STORAGE	1000 USER
9.	CARD TYPE	EM (ID) CARD IC OPTINAL
10.	CARD READING DISTANCE	1-15CM



ONE DOOR ACCESS CONTROLLER

SPECIFICATIONS

1. TECHNICAL PARAMETER

1. PROGRAMMING PASSWORD	123456
2. COMMON ACCESS PASSWORD	NONE
3. RELAY UNLOCK OUTPUT	5 SECONDS
4. OPEN MODE	CARD ACCESS PASSWORD
5. SECURITY MODE	OFF
6. BLACK LIGHT (FOR OPTIONAL)	AUTO
7. W26 PORT (FOR OPTIONAL)	INPUT

FACTORY
DEFAULT

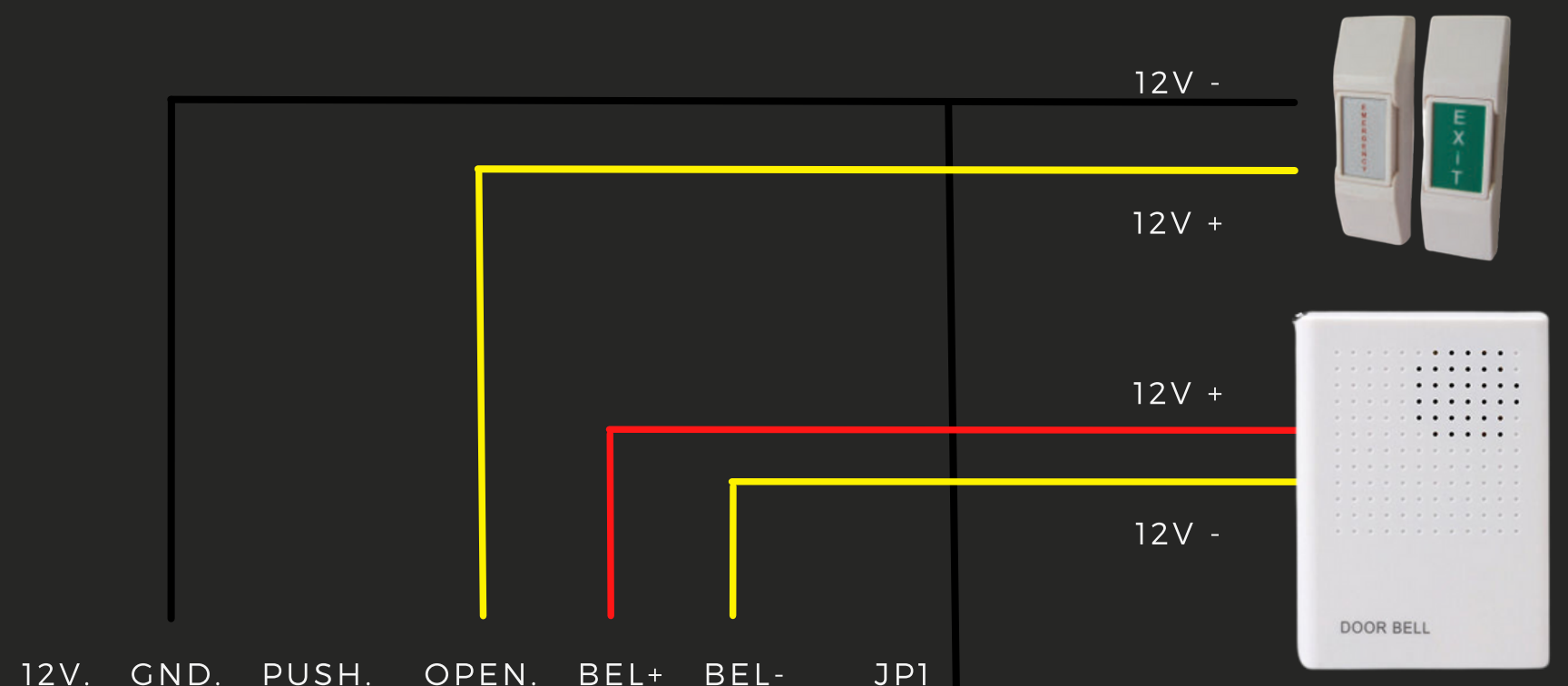
SPECIFICATIONS





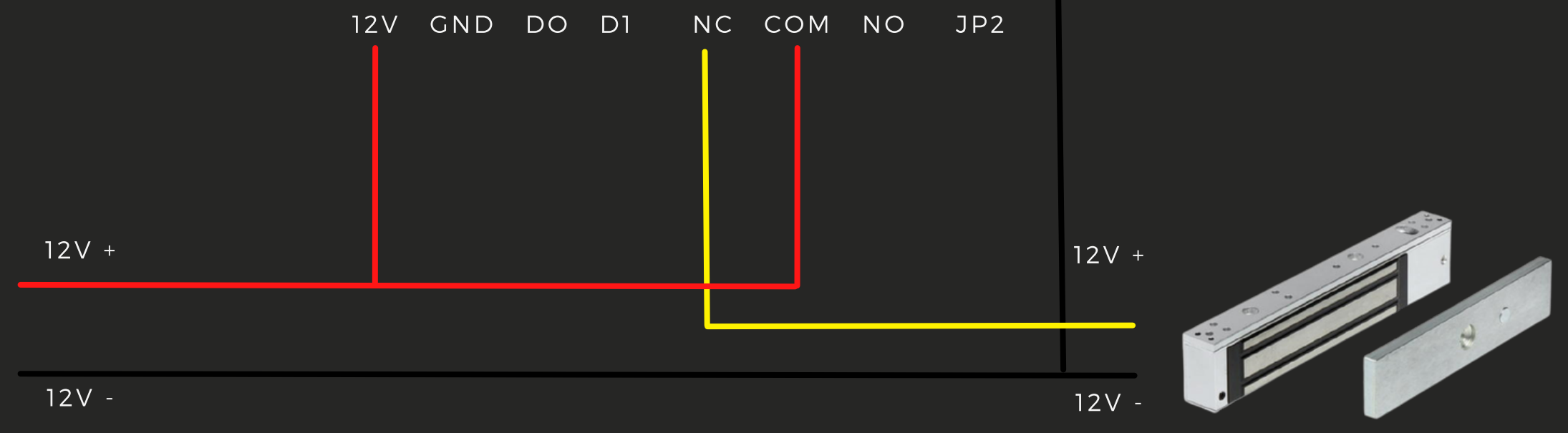
WIRE DIAGRAM

REMARK
IF LET RELAY DRIVE ELECTRONIC
LOCK PLEASE CONNECT A
BACKWARD DIODE WITH THE
LOCKS "+" AND "-" POLES.



12V. GND. PUSH. OPEN. BEL+ BEL- JP1

12V GND DO D1 NC COM NO JP2

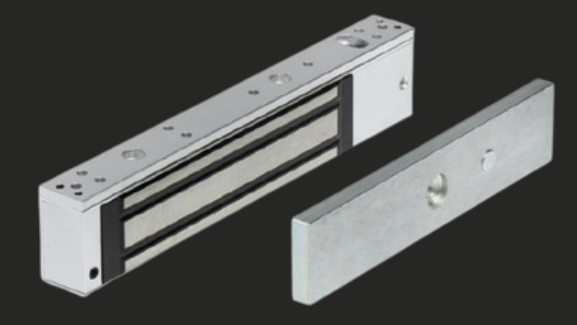


12V +

12V -

12V +

12V -



CHANGE PROGRAMMING PASSWORD #PROGRAMMING #0 NEW PASSWORD #
(IF PROGRAMMING PASSWORD LOST ,PERFORM 3.2 RESET TO FACTORY DEFAULT (123456)

ADD CARD USER #PROGRAMMING #1 READ CARD #
IF ADD MULTI CARD , READ CARDS CONTINUOUSLY

SET COMMAND ACCESS PASSWORD #PROGRAMMING #21 NEW COMMON ACCESS PASSWORD #
COMMAND ACCESS PASSWORD IS ONLY ONE , OPEN METHOD : COMMAND PASSWORD #

DELETE ALL USER #PROGRAMMING #40 0000 #
DELETE ALL CARD AND PIN EXCEPT COMMON ACCESS PASSWORD

DELETE USER BY READ CARD #PROGRAMMING #41 READ CARD
IF DELETE MULTI CARD , READ CARD CONTINUOUSLY

PROGRAMMING GUIDE BASIC FUNCTION

REMARK
IF LET RELAY DRIVE ELECTRONIC
LOCK PLEASE CONNECT A
BACKWARD DIODE WITH THE
LOCKS "+" AND "-" POLES.



CHANGE PROGRAMMING PASSWORD #PROGRAMMING #0 NEW PASSWORD #
(IF PROGRAMMING PASSWORD LOST ,PERFORM 3.2 RESET TO FACTORY DEFAULT (123456)

ADD CARD USER #PROGRAMMING #1 READ CARD #
IF ADD MULTI CARD , READ CARDS CONTINUOUSLY

SET COMMAND ACCESS PASSWORD #PROGRAMMING #21 NEW COMMON ACCESS PASSWORD #
COMMAND ACCESS PASSWORD IS ONLY ONE , OPEN METHOD : COMMAND PASSWORD #

DELETE ALL USER #PROGRAMMING #40 0000 #
DELETE ALL CARD AND PIN EXCEPT COMMON ACCESS PASSWORD

DELETE USER BY READ CARD #PROGRAMMING #41 READ CARD
IF DELETE MULTI CARD , READ CARD CONTINUOUSLY

PROGRAMMING GUIDE EXPAND FUNCTION

REMARK

IF LET RELAY DRIVE ELECTRONIC
LOCK PLEASE CONNECT A
BACKWARD DIODE WITH THE
LOCKS "+" AND "-" POLES.





DOOR ACCESS DH2000

BASIC SETUP CONFIGURATION

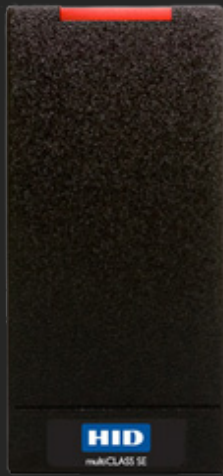


DATA 0

DATA 1

GND

12V +



12V +

OPEN

12V -

INDOOR

BELL

12V -

12V +



12DC+

GND

PUSH

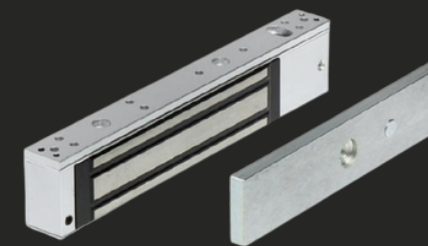
LOCK

12V +

12V -

12V -

12V +



PROGRAMMING GUIDE V2000

ASSEMBLE GUIDELINE



ASSEMBLE GUIDELINE

DISCHARGE FRONT BOARD AND "TEN" -LIKE SCREW IN BOTTOM BOARD, THEN TAKE OFF BOTTOM BOARD, ASSEMBLE BOTTOM BOARD IN SIDE OF ENTRY WITH PLASTIC INSERTS AND SCREWS.

HOW TO CONNECT ELECTRICAL WIRE:

CONNECT WIRE WITH REFERENCE TO ROUTINE MARK IN ELECTRICAL BOARD.

CAUTION! BEFORE POWER ON, MUST CHECK VOLTAGE OF POWER SUPPLIER AND CATHODE AND POSITIVE

REMARK:

WARNING ALARM SWITCH IS AT RIGHT BOTTOM SIDE, VOICE DIED WITH DOOR CLOSED, THEN SPRING OUT BUZZER AND MAKE CONTINUOUS WARNING.

OPERATION GUIDELINES

ACCESS CONTROLLER INITIALIZATION:

AFTER POWER OFF, CONNECT BIN 2 AND BIN 3 OF RESET SUPPLY POWER, BUZZER MAKE CONTINUOUS

WARNING ALARM, POWER LIGHT(RED LIGHT), OK(GREEN) LIGHT AND MODE(ORANGE) LIGHT ALL FLASH.

CUT OFF POWER, THEN CONNECT POWER SUPPLY, ALL LIGHTS, INCLUDING POWER, OK AND MODE, FLASH,

WAITING FOR EXCHANGING PEST SWITCH

BIN 2 AND BIN3 DISCONNECTED, BIN 1 AND BIN CONNECTED.

ACCESS CONTROLLER INITIALIZATION IS COMPLETED, AFTER A VOICE OF BUZZER, CONTROLLER WILL BE

AVAILABLE FOR USER.

REMARK:

INITIALIZATION ONLY MODIFY SYSTEM PASSWORD TO DEFAULT PASSWORD(DEFAULT WHEN EX-

WORK).OTHER DATA WILL NOT CHANGED.

ELECTRICAL LOCK ASSEMBLING:

WHEN CONNECT BIN 1 AND BIN 2, OPEN SIGNAL IS OUTPUTTED(POWER ON AND DOOR OPEN); WHEN

CONNECT BIN 2 AND BIN 3, CLOSE SIGNAL IS OUTPUTTED(POWER OFF AND DOOR CLOSED); DRIVE VOLTAGE

FOR ELECTRICAL LOCK IS 17V

PROGRAMMING GUIDE EXPAND FUNCTION

ASSEMBLE GUIDELINE



HOW TO SET UP ACCESS CONTROLLER SYSTEM PROGRAM.

"#" KEY: FUNCTION KEY, GO INTO SYSTEM EDIT MODE PUSH" #", THEN RED, GREEN AND ORANGE LIGHTS ALL WORK. INPUT 5 SYSTEM PASSWORDS AND A VOICE OF BUZZER IS MADE.

"O" KEY: LOG ON USER CARD PLUS PASSWORD

PUSH" O" KEY,ORANGE LIGHT LIGHTS, RED AND GREEN LIGHTS DIE INPUT 4 DIGITAL USER NO.VALID. AFTER READING USER CARD, A BUZZER INVOICE HAPPENED, THEN AGAIN INPUT 6 DIGITALS PASSWORD, A LONG BUZZER VOICE HAPPENED, GREEN LIGHTS DIED AFTER FLASH, ORANGE AND RED LIGHT LIGHTS AND USER LOGGED ON SUCCESSFULLY.

"I" KEY: MODIFY SYSTEM PASSWORD

PUSH" I" , ORANGE LIGHT LIGHTS, RED AND GREEN LIGHTS DIE. USER INPUTS 5 DIGIT NUMBER PASSWORD (SUCH AS 23456), ONCE INPUT COMPLETED, BUZZER MAKES A SHORT VOICE, GREEN LIGHT DIED AFTER FLASH, RED LIGHT AND ORANGE LIGHTS LIGHT, THEN MODIFICATION OF PASSWORD IS SUCCESSFUL.

CAUTION: PLEASE USER KEEP PASSWORD WELL. WHEN YOU GO INTO SYSTEM PROGRAM MODE AGAIN, NEED INPUT THE PASSWORD, IF FORGET IT, PLEASE EXECUTE INITIALIZATION PROCESS.

"2" KEY: LOG ON USER CARD, OR PASSWORD

PUSH" 2" KEY, ORANGE LIGHT LIGHTS, RED AND GREEN LIGHTS DIE INPUT 4 DIGITAL USER NO., GREEN LIGHT LIGHTS, SHOWING USER NO. VALID. IF BUZZER MAKES 3 INVOICES, SHOWING THAT THE USER NO. ALREADY LOGGED ON; IF BUZZER MAKE 4 LONG CONTINUOUSLY VOICES, SHOWING MEMORY IS FULL, CAN' T LOG ON. AFTER READING USER CARD, OR INPUTTING 6 DIGITAL PASSWORD, GREEN LIGHT DIED AFTER FLASH; ORANGE AND RED LIGHTS LIGHT AND USER LOGGED ON SUCCESSFULLY. IF BUZZER MAKE 3 CONTINUOUS VOICES, SHOWING THAT THE CARD OR PASSWORD ALREADY LOGGED ON, CAN'T REPEATEDLY LOG ON

"3" KEY: DELETE SOLO USER CARD OR PASSWORD, OR CARD PLUS PASSWORD.

PUSH" 3" KEY, ORANGE LIGHT LIGHTS, RED AND GREEN LIGHTS DIED. INPUT 4 DIGITAL NUMBER TO BE DELETED, A LONG BUZZER IS MADE

PROGRAMMING GUIDE EXPAND FUNCTION

ASSEMBLE GUIDELINE 2



"A" KEY: DELETE ALL USER CARD OR PASSWORD OR CAR PLUS PASSWORD PUSH" 4" A LONG BUZZER IS MADE, GREEN LIGHT DIE AFTER FLASH, ORANGE AND RED LIGHTS LIGHT, SHOWING ALL USER DATA ARE DELETED

"5" KEY: SET UP TIME OF OPENING DOOR.

PUSH" 5" , ORANGE LIGHT LIGHTS, RED AND GREEN LIGHTS DIED. INPUT 2 DIGITAL NUMBER FOR OPEN DOOR TIME, BUZZER MAKE A LONG VOICE, GREEN LIGHT DIED AFTER FLASH, ORANGE AND RED LIGHTS LIGHT, THE TIME OF OPEN DOOR IS SET UP SUCCESSFULLY.

"G" KEY CONTINUOUSLY WARRANT THE CAR OF CONSUMERS

A , PRESS" 9" KEY, RED LIGHT OUT

B, INPUT FOUR CONSUMERS'

NUMBERS OF THE FIRST CARD, GREEN LIGHT ON, THE INPUTTED NUMBERS IS VALID

C, CONTINUOUSLY IDENTIFY THE CARS THAT ARE GOING TO BE WARRANTED (THE CARS' NUMBER INCREASE BY DEGREES) , PRESS"

"# " KEY IN THE END TIME

"6" KEY:EXIT KEY.

BUZZER MAKES A LONG VOICE, GREEN LIGHT DIE AFTER FLASH, RED LIGHT LIGHTS, ORANGE LIGHT DIES, ACCESS CONTROLLER EXITS FROM SYSTEM PROGRAM MODE AND GOES INTO NORMAL WORK MODE. THE SYSTEM PASSWORD PROVIDED WITH THE LOCKING-MACHINE FUNCTION. THE SPECIFIC OPERATION IS : INPUT THE PROGRAMME CODE + "# " + "8" , AND THEN THE ACCESS CONTROL MACHINE WILL STAND IN LOCKING STATE, NO CAR AND CODE WILL BE VALID. REPEATING THE SAME OPERATION CAN CANCEL THE LOCKING STATE. DESCRIPTION: DURING SYSTEM PROGRAM PROCESS, IF TYPE ERROR OR WRONGLY APERATION, CONTROLLER WILL MAKE WARNING ALARM FOR INCIDENT WITH 3 LONG BUZZERS AND RETURN TO NORMAL USE STATUS. IF 5 2-SHORT-1-LONG BUZZERS ARE MADE, SHOW SYSTEM MEMORY READS WRONGLY

PROGRAMMING GUIDE EXPAND FUNCTION

ASSEMBLE GUIDELINE 3

