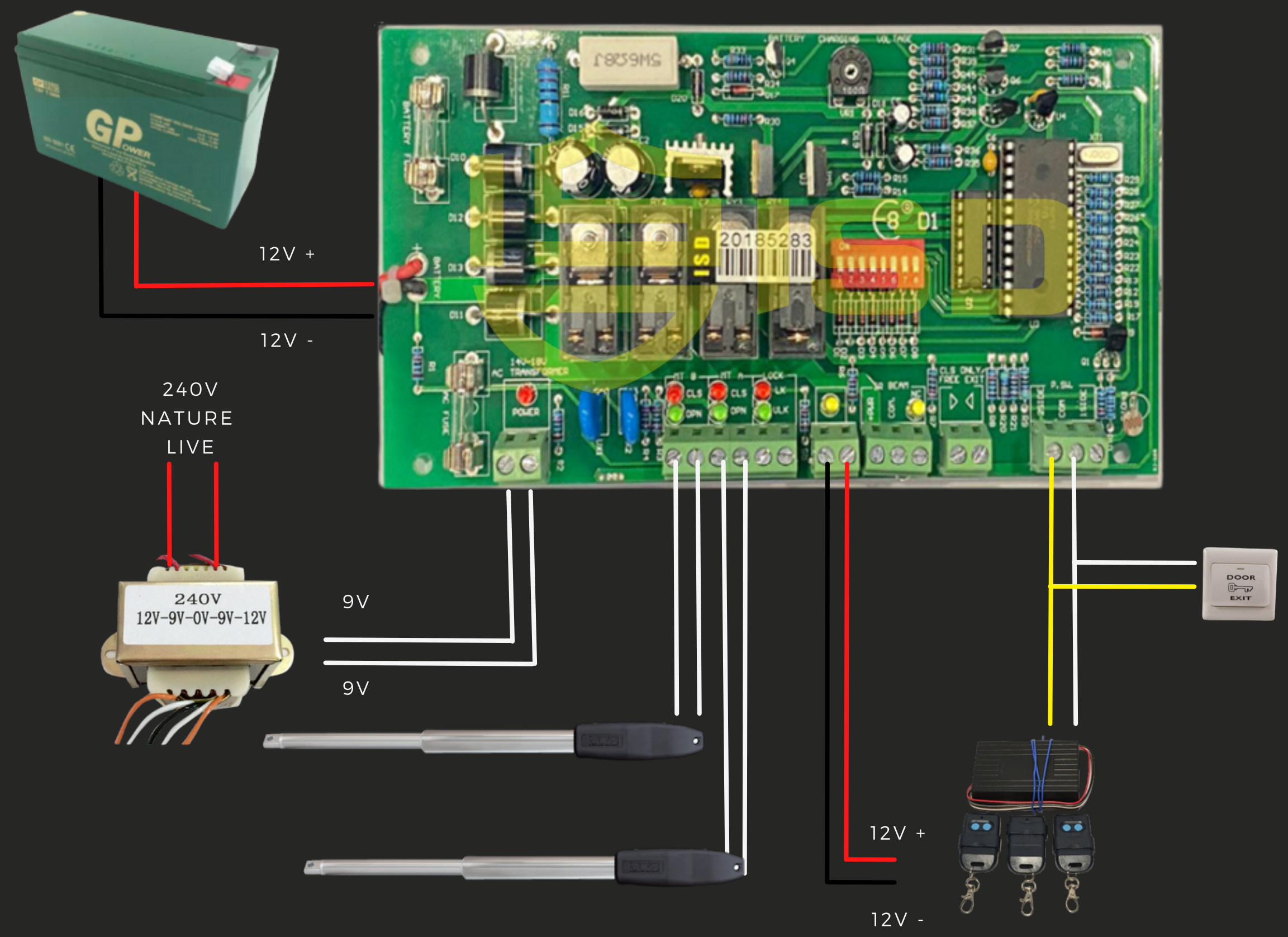
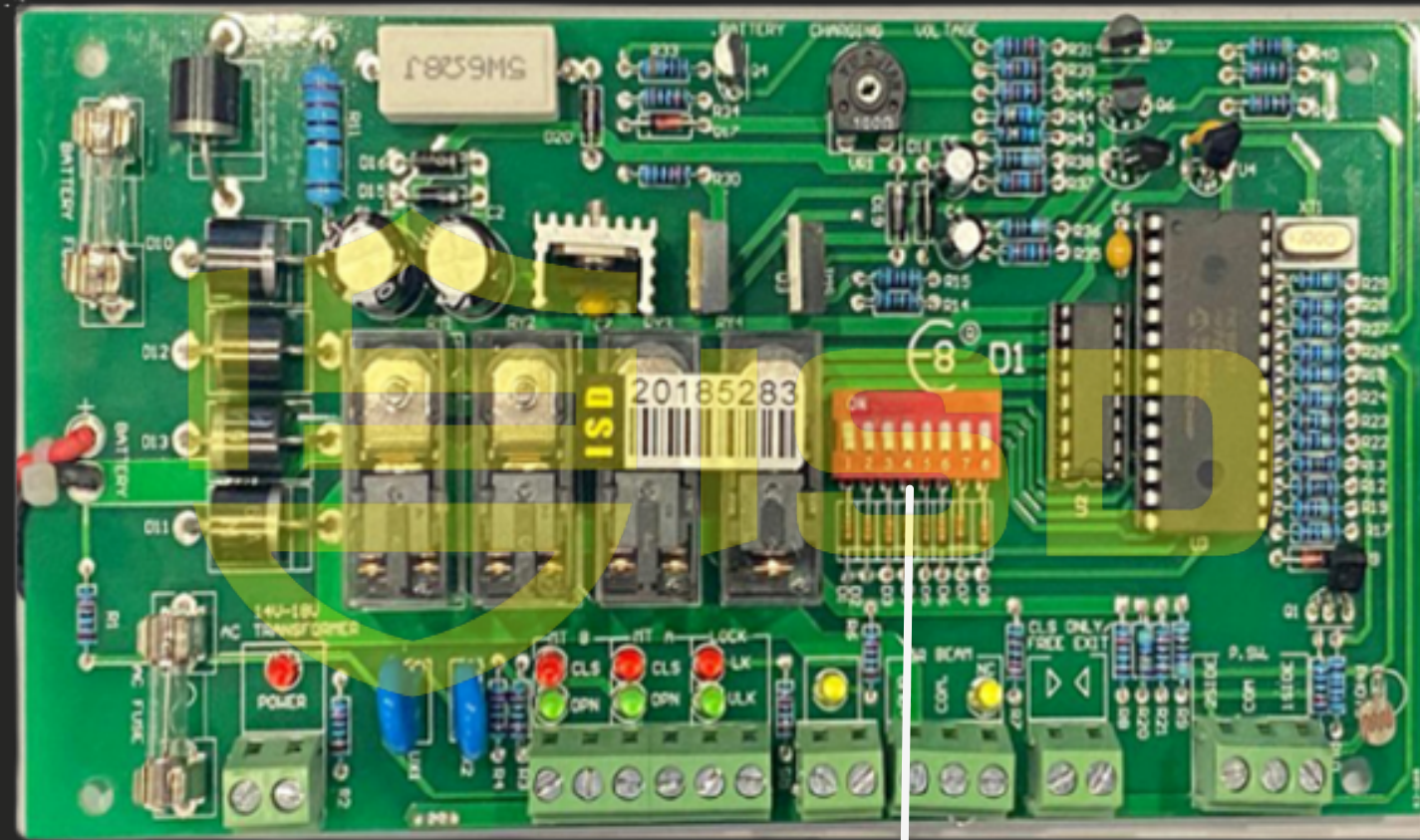


# SWING D1 PANEL



STANDERD WIRE DIGRAM





# SWING D1 PANEL

## SETTING THE DIP SWITCH

THE DIP SWITCH ON THE CONTROL PANEL OPERATES AS FOLLOWING:

- [1] ON = DELAY CLOSE FOR MOTOR A
- [2] ON= SMALL REVERSE BEFORE OPENING
- [3] & [4] OFF = LIGHT RELAY ON WHEN GATE OPEN & CUT OFF 1 MIN. AFTER GATE CLOSE
- [5] ON = SINGLE GATE OPERATION ONLY FOR PUSH SWITCH
- [6] OFF = NOT IN USE
- [7] & [8] OFF = DISABLE AUTO CLOSE
- [7] OFF & [8] ON = 30 SEC. AUTO CLOSE
- [7] ON & [8] OFF - 60 SEC. AUTO CLOSE
- [7] ON & [8] ON \* 120 SEC. AUTO CLOSE

SETTING THE SYSTEM

PROGRAMING



# SWING D1 PANEL

UNPLUG ALL POWER AND MAKE SURE THE GATE COMPLETELY CLOSED.

SUPPLY POWER TO THE SYSTEM AND PRESS TRANSMITTER (BUTTON 2). LET THE MOTOR OPEN (LOW SPEED) UNTIL BOTH GATES ARE FULLY OPENED. BOTH THE MOTOR WILL STOP AUTOMATICALLY WHEN THE GATE IS HARD STOPPED.

HIGH CURRENT CUT-OFF BY THE CIRCUIT BOARD IS AUTOMATICALLY ACHIEVED.

PRESS TRANSMITTER (BUTTON 2) AGAIN AND LET THE MOTOR CLOSE (HIGH SPEED) UNTIL BOTH GATES ARE FULLY CLOSED. BOTH THE MOTOR WILL STOP AUTOMATICALLY WHEN THE GATE IS HARD STOPPED. HIGH CURRENT CUT-OFF

BY THE CIRCUIT BOARD IS AUTOMATICALLY ACHIEVED.

THE SYSTEM HAS NOW STORED THE RANGE BETWEEN OPENING AND CLOSING TIME. THE MICROPROCESSOR WILL AUTOMATICALLY ADJUST THE LOW SPEED AND HIGH SPEED OPENING / CLOSING OF THE SYSTEM.

TRY FEW TIMES TO MAKE SURE THE MICROPROCESSOR HAS STORED THE CORRECT RANGE.

THE GATE WILL AUTO REVERSE WHEN THE SYSTEM DETECTS OBSTRUCTION (HIGH AMP) DURING CLOSING OPERATION.

THE GATE WILL STOP WHEN THE SYSTEM DETECTS OBSTRUCTION (HIGH AMP) DURING OPENING OPERATION.

TO RESET THE MEMORY, REMOVE ALL POWER SOURCES (MAINS AND BATTERY). WAIT FOR 30 SECONDS.

SYSTEM WILL RESET THE OPEN / CLOSE CALIBRATION. REPEAT STEP #1 - 5 TO SET THE MEMORY.

CHECK MOTOR ROTATION DIRECTION

AFTER MAIN SUPPLY HAS BEEN CONNECTED TO THE CONTROL PANEL, MAKE SURE THE GATE SWINGS IN THE CORRECT DIRECTION. THIS IS IMPORTANT AS WRONG DIRECTION WILL CAUSE THE SYSTEM WORK IN THE REVERSE MANNER.

THE SYSTEM WILL INITIATE AN OPEN SIGNAL THE FIRST TIME THE REMOTE IS PRESSED. THE SECOND TIME THE REMOTE IS PRESSED THE SYSTEM INITIATES A CLOSE FUNCTION.

BOTH GATES SHOULD EITHER OPEN OR CLOSE IN TANDEM. TO REVERSE THE DIRECTION OF THE MOTOR, REVERSE THE POLARITY ON THE WIRE AT THE CONTROL PANEL.

CHECK REMOTE CONTROL TRANSMITTER SIGNAL

AFTER THE RECEIVER PANEL IS CONNECTED TO THE CONTROL PANEL, CHECK THE SIGNAL TRANSMISSION.

THE TRANSMITTER CONTAINS TWO SIGNAL REPRESENTED BY BUTTON 1 AND BUTTON 2. CONFIRM WITH OWNER WHICH FUNCTION

THEY WANT FOR EACH OF THE BUTTON. BUTTON 1 CAN BE SET AS SINGLE LEAF OPERATION WHILE BUTTON 2 SET AS DOUBLE LEAF(S) OPERATION AND VICE VERSA. CONNECT SIGNAL WIRE INTO RIGHT HAND SIDE PORT (COM, A, & B).

PUSH SWITCH PORT CAN BE CONNECTED TO PUSH BUTTON/SWITCH INSIDE THE HOUSE. IT CAN EITHER FUNCTION AS SINGLE OR

DOUBLE GATE OPERATION. DIP SWITCH 5 MUST BE SET TO ON BEFORE SINGLE GATE OPERATION CAN BE USED.

USER MENU

